

**SOLTIS**

**86**



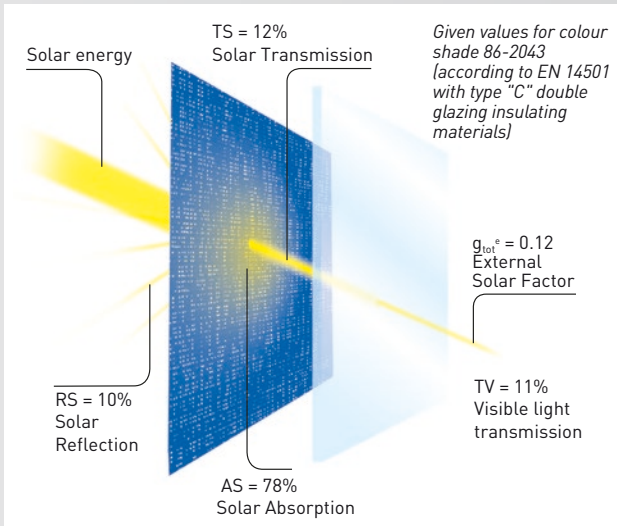
**Serge Ferrari** 

## MAIN FEATURES

- Perfect compromise between thermal protection and visual comfort
- Excellent outward visibility
- Weather and UV resistance
- Lightweight, durable and 100% recyclable

## APPLICATIONS

- Facade blinds
- Conservatory and glassroof blinds
- Shadesails



Installed externally, Soltis 86 blocks up to 88% of the solar radiation



Seamless large dimensions possible



Colour harmony for combining blinds, facades and permanent awnings

## Thermal protection and light control

Soltis 86 offers a mesh opening, ideal for combining:

- efficient solar protection,
- sufficient natural light contribution to ensure occupier well-being.

Soltis 86 therefore plays a full part in:

- building thermal control,
- creating pleasant, appropriate light environments.

## Matchless transparency

Soltis 86's micro-ventilated texture ensures:

- excellent visual contact with the exterior: the view is not hidden,
- visual comfort appreciated in many architectural situations.

## Harmonised ranges

All Soltis 86 colours are coordinated with Soltis 92 to:

- coordinate all facades of a building,
- satisfy visual comfort requirements for each facade orientation,
- regulate thermal protection to provide energy savings.





Bronze

↔ ↔ 86-2043



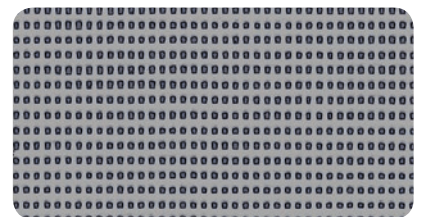
White

↔ ↔ 86-2044



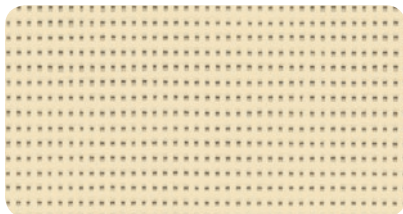
Alu/White

↔ ↔ 86-2051



Beaten-metal

↔ ↔ 86-2045



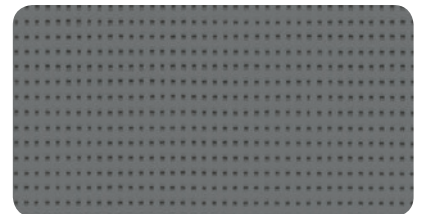
Champagne

↔ ↔ 86-2175



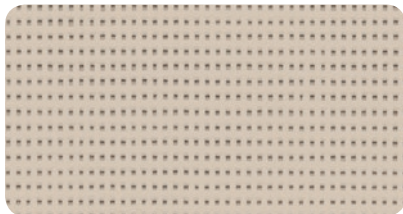
Alu/Oat

↔ ↔ 86-2046



Concrete

↔ ↔ 86-2167



Sandy beige

↔ ↔ 86-2135



Alu/Alu

↔ ↔ 86-2048



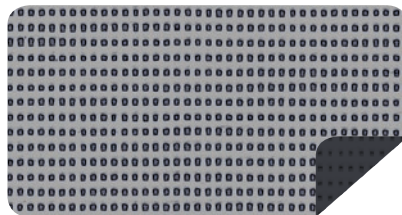
Anthracite

↔ ↔ 86-2047



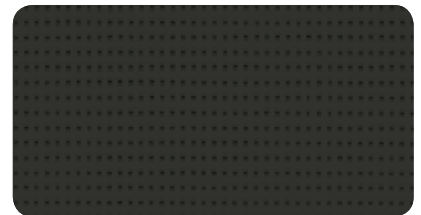
Boulder

↔ ↔ 86-2171



Alu/Anthracite

↔ 86-2068

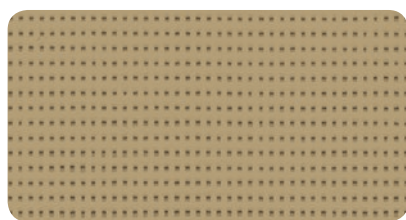


Black

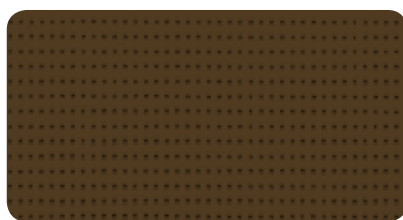
↔ ↔ 86-2053

↔ Available in 177 cm width

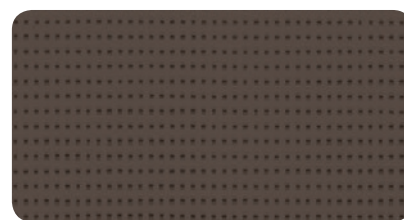
↔ Available in 267 cm width



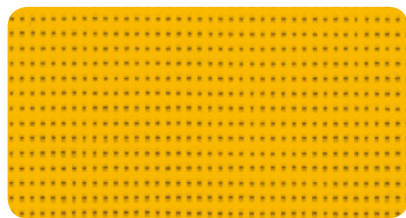
Pepper  $\vec{S}$   $\vec{L}$  86-2012



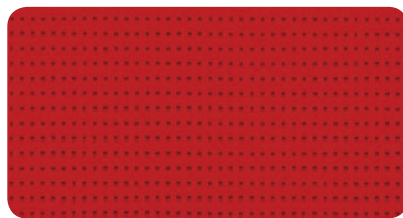
Cocoa  $\vec{S}$  86-2148



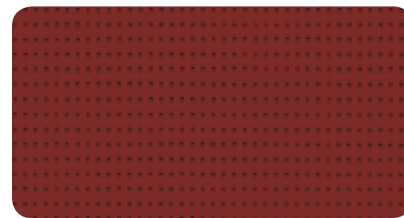
Bronze  $\vec{S}$   $\vec{L}$  86-2043



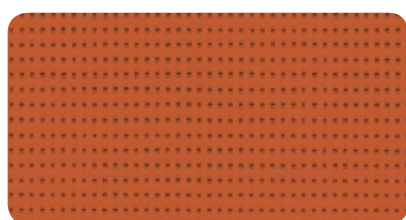
Buttercup  $\vec{S}$  86-2166



Red  $\vec{S}$  86-8255



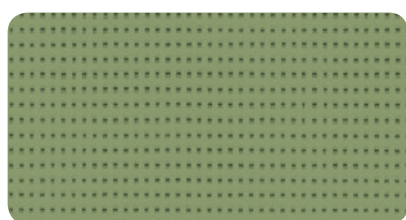
Muscat  $\vec{S}$  86-50260



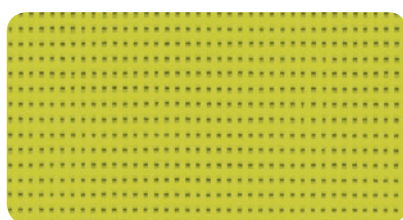
Caramel  $\vec{S}$  86-50261



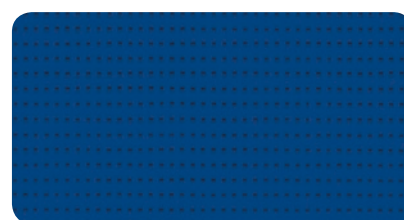
Orange  $\vec{S}$  86-8204



Moss green  $\vec{S}$  86-2158



Bamboo  $\vec{S}$  86-50333



Midnight blue  $\vec{S}$  86-2161

## Solar and light properties (EN 14501)

	References	Width [cm]		TS	RS	AS	TV n-h	TV n-n	$g_{tot}^e$	$g_{tot}^i$	NCS Codification
		177	267								
	86-2012	•	•	18	27	55	17	16	0.15	0.48	S 4010 Y 30 R
	86-2043	•	•	12	10	78	11	13	0.12	0.53	-
	86-2044	•	•	32	59	9	30	14	0.21	0.38	S 0500 N
	86-2045	•	•	14	29	57	14	13	0.12	0.47	-
	86-2046 A	•	•	21	43	36	20	14	0.16	0.43	-
	86-2046 B	•	•	19	58	23	19	14	0.14	0.38	-
	86-2047	•	•	16	7	77	16	15	0.14	0.54	-
	86-2048	•	•	22	42	36	22	16	0.17	0.43	-
	86-2051 A	•	•	20	40	40	20	15	0.15	0.44	-
	86-2051 B	•	•	20	60	20	20	15	0.14	0.37	-
	86-2053	•	•	15	5	80	15	13	0.14	0.54	S 8500 N
	86-2068 A	•	•	16	35	49	15	15	0.13	0.45	-
	86-2068 B	•	•	16	7	77	15	15	0.14	0.54	-
	86-2135	•	•	20	41	39	20	16	0.15	0.43	S 2005 Y 50 R
	86-2148	•	•	14	13	73	14	13	0.13	0.52	S 7010 Y 30 R
	86-2158	•	•	15	25	60	14	12	0.13	0.48	S 4020 G 30 Y
	86-2161	•	•	16	17	67	14	14	0.14	0.51	S 5040 R 80 B
	86-2166	•	•	30	45	25	26	15	0.21	0.42	S 0570 Y 10 R
	86-2167	•	•	15	17	68	14	13	0.13	0.51	S 6005 R 80 B
	86-2171	•	•	19	39	42	17	14	0.15	0.44	S 2502 B
	86-2175	•	•	28	57	15	26	14	0.19	0.39	S 0505 Y 20 R
	86-8204	•	•	27	41	32	19	14	0.19	0.44	S 0585 Y 40 R
	86-8255	•	•	23	24	53	17	16	0.18	0.49	S 1580 Y 90 R
	86-50260	•	•	15	13	72	14	13	0.14	0.52	S 5040 R
	86-50261	•	•	21	35	44	15	14	0.16	0.45	S 3050 Y 60 R
	86-50333	•	•	22	32	46	19	15	0.17	0.46	S 2070 G 70 Y

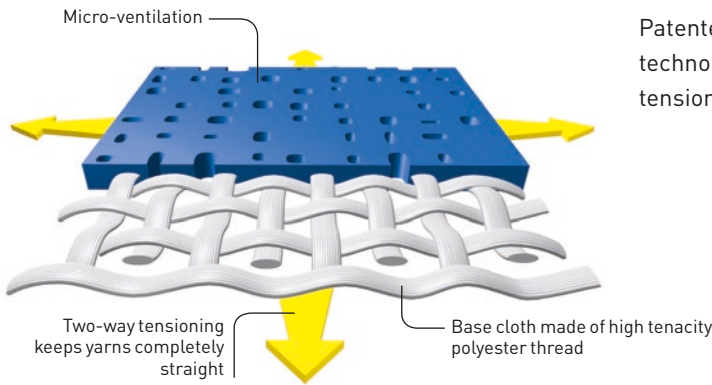
**A:** Aluminium face exposed to the sun  
**B:** Coloured face exposed to the sun

**TS:** Solar Transmission (%)  
**RS:** Solar Reflection (%)  
**AS:** Solar Absorption (%)  
**TS + RS + AS = 100%** of incident energy  
 **$g_{tot}^e$ :** External solar factor  
 **$g_{tot}^i$ :** Internal Solar Factor  
Type «C» glazing: insulating, slightly emissive  
double glazing in position 3 (4 + 16 + 4; argon-filled  
- g = 0.59 - U = 1.2).

**TV n-h:** Normal-hemispherical visible light  
transmission (%)  
**TV n-n:** Normal-normal visible light  
transmission (%)



# Exclusive Précontraint Serge Ferrari® technology



Patented worldwide, Précontraint Serge Ferrari® technology involves keeping the composite under tension throughout the manufacturing cycle.

## Strength characteristics

- Exceptional dimensional stability
- Long-term strength
- Greater coating thickness at the top of the yarns
- Perfect flatness

## Benefits\*

- **No material deformation during installation or usage**
- **No elongation, tear resistant**
- **Long-term strength and aesthetic quality**
- **Thinness**
- **Smooth finish, easy maintenance**
- **Compactness, easy rolling**

\* Benefits observed for normal product usage.

## NF Toiles certification

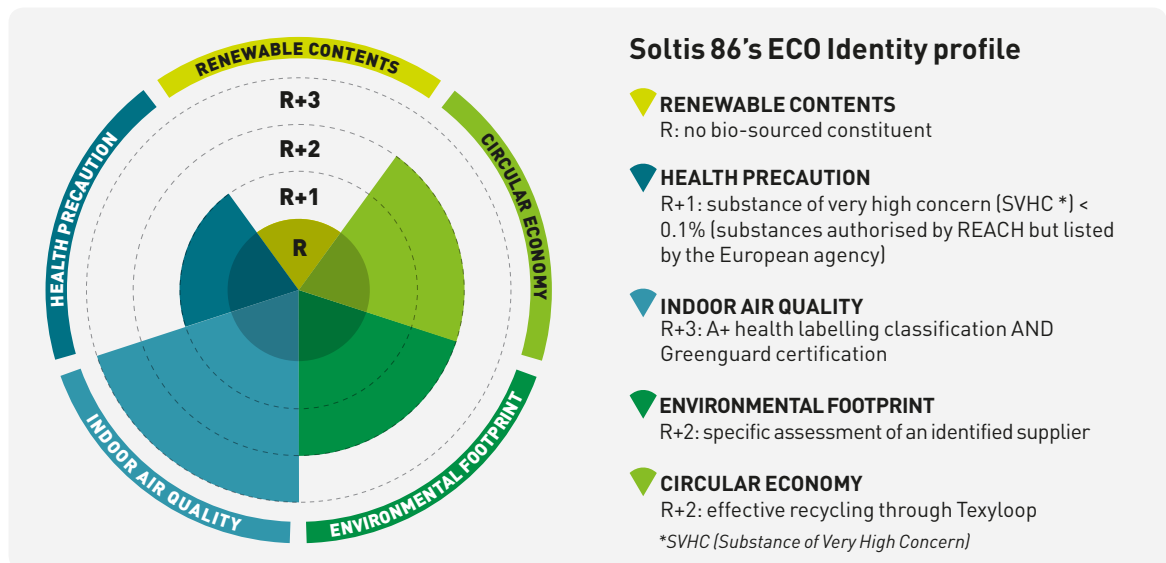
- The French "NF Toiles" label guarantees that Soltis 86 maintain a high level of quality and homogeneity.
- Certified references meet thermo-optical, strength and durability requirements stipulated for the "NF Toiles" label.
- Certification application pending for colour 86-2051 (solar and light properties quoted provisionally)



## ECO IDentity, health and environmental performance

Serge Ferrari assesses the health and environmental performance of its composite materials using 5 indicators. Level "R" represents the regulations or the basic offer without regulatory requirements. Higher levels represent voluntary advances that exceed regulations.

For more information: please ask for details.



ECO IDentity complies with ISO 14021 environmental communication standard:

- exact
- verifiable
- pertinent
- not misleading

Technical properties	Soltis 86	Standards
Weight	380 g/m <sup>2</sup>	EN ISO 2286-2
Thickness	0.43 mm	
Width	177 cm - 267 cm	
Length of rolls		
Standard format length in 177 cm	50 lm	
Standard format length in 267 cm	40 lm	
Physical properties		
Tensile strength (warp/weft)	230/160 daN/ 5 cm	EN ISO 1421
Tear strength (warp/weft)	45/20 daN	DIN 53.363
Flame retardancy		
Rating	<b>B1/DIN 4102-1 • BS 7837 • BS 5867 • SCHWERBRENNBAR-Q1-Tr1/ONORM A 3800-1 • CLASSE 1/UNI 9177-87 • M1/UNE 23.727-90 • VKF 5.2/SN 198898 • 1530.3/AS/NZS • G1/GOST 30244-94 • METHOD 1/NFPA 701 • CSFM T19 • CLASS A/ASTM E84</b>	
Euroclass	<b>B-s2,d0/EN 13501-1</b>	
Management systems		
for Quality	ISO 9001	
Certifications, labels, guarantees, recycling		



The technical data above are averaged values with a +/- 5% tolerance.

The buyer of our products is fully responsible for their application and their transformation with regard to any possible third party. The buyer of our products is responsible for their implementation and installation according to the standards, workmanship and safety regulations in force in destination countries. For information on our contractual warranty, please refer to the relevant terms and conditions.

The values quoted above represent results of tests performed in compliance with common design practices and are provided for information only to enable customers to make the best use of our products. Our products are subject to changes based on technical advances and we reserve the right to modify their characteristics at any time. The buyer of our products is responsible for checking the validity of the above data.

For metallic and interferential colours, a difference in shade may be observed in different roll widths for the same reference: small width (1770 mm) and large width (2670 mm). We advise strongly against combined assembly of these.

## TOOLS AND SERVICES

- LCA and FDES (Health and Environmental Datasheet) available on request
- Personalised service for simulating your project's thermal performance and related Soltis solar protection systems: please contact your Serge Ferrari representative
- Tool for evaluating energy savings generated by Soltis solar protection systems: [www.textnergie.org](http://www.textnergie.org)
- Document and photo libraries: [www.sergeferrari.com](http://www.sergeferrari.com)

### → Contact

- Headquarters:  
+ 33 (0)4 74 97 41 33
- Your local representative:  
[www.sergeferrari.com](http://www.sergeferrari.com)

### → TEXYLOOP®

- The Serge Ferrari operational recycling chain
- Secondary raw materials of high intrinsic value compatible with multiple processes
- A quantified response to combat depletion of natural resources

[www.texyloop.com](http://www.texyloop.com)